



FARMWARD
COOPERATIVE

Advancing farming for generations

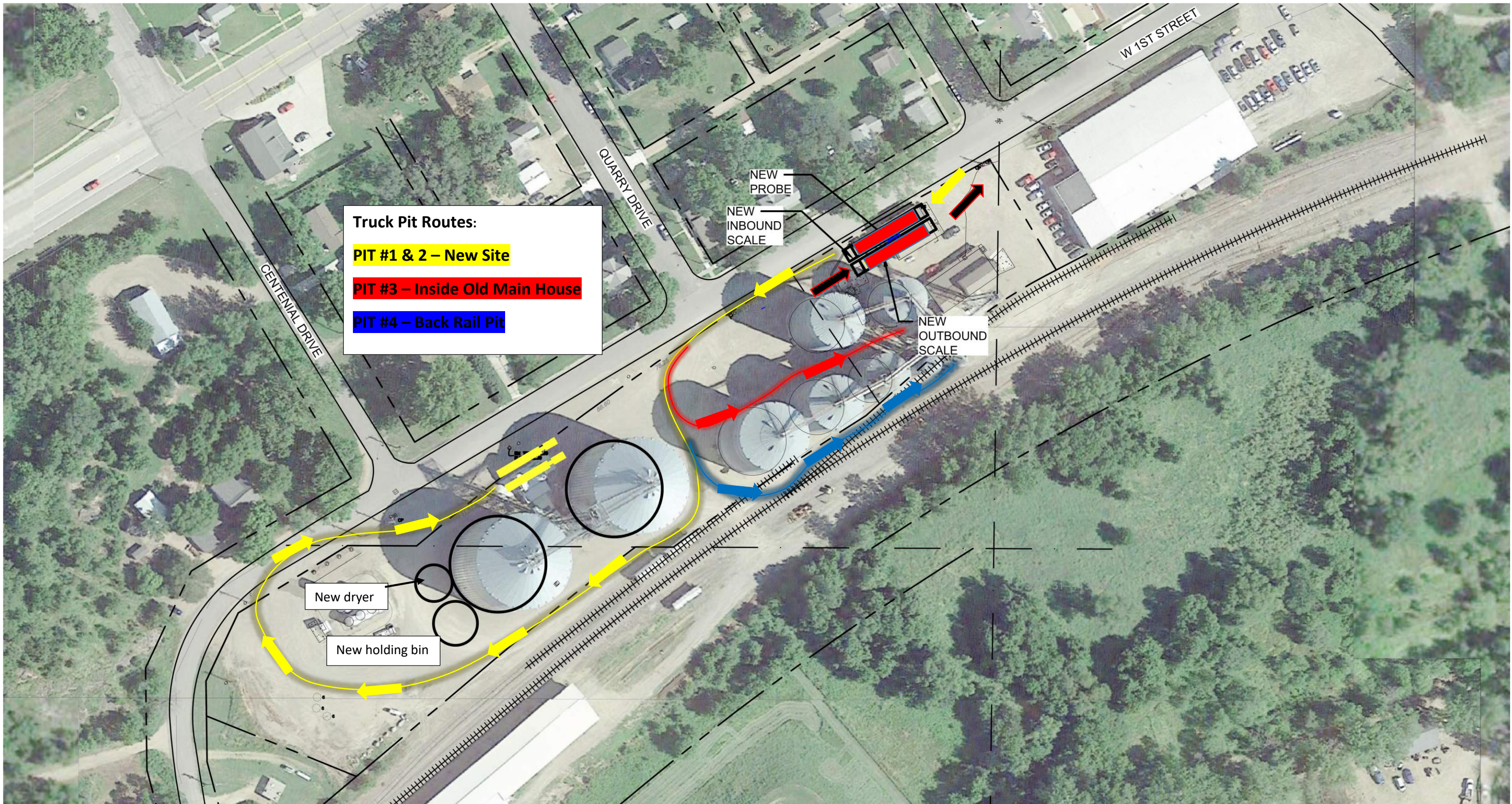
New Morton Grain Scale Procedures:

- 1. Proceed to inbound scale (North Side Scale)**
 - a. Verify correct account and disposition of grain
 - b. Wait for load to be probed, weighed, and graded
 - c. Observe pit number designation on green stoplight (light #'s 1-4)
 - d. Proceed to corresponding pit

- 2. Pit 1 & 2 (New Site)**
 - a. Majority of dry corn and all wet corn will now be dumped at these pits
 - b. After dumped, proceed to outbound scale (South Side Scale)
 - c. Wait for empty weight to be taken
 - d. Your ticket will automatically print at the new ticket printer station
 - e. Exit facility

- 3. Pit 3 (Old main house pit/scale)**
 - a. Majority of beans and some dry corn dumped at this pit
 - b. After dumping at this pit, stay on scale, your empty weight will be taken here
 - c. Ticket will be printed in the office, come in and grab ticket
 - d. Exit the facility

- 4. Pit 4 (Back rail pit)**
 - a. Some beans and dry corn will be dumped on this pit
 - b. After dumping on this pit facing east, drive back to new outbound scale
 - c. Proceed unto outbound scale facing east
 - d. Wait for empty weight to be taken
 - e. Your ticket will automatically print at the new ticket printer station
 - f. Exit facility



Truck Pit Routes:

- PIT #1 & 2 – New Site**
- PIT #3 – Inside Old Main House**
- PIT #4 – Back Rail Pit**



1
EX7

SITE LAYOUT



1"= 100'

SITE LAYOUT EXHIBIT
MORTON, MN



PROJECT: 170004
05/02/17