



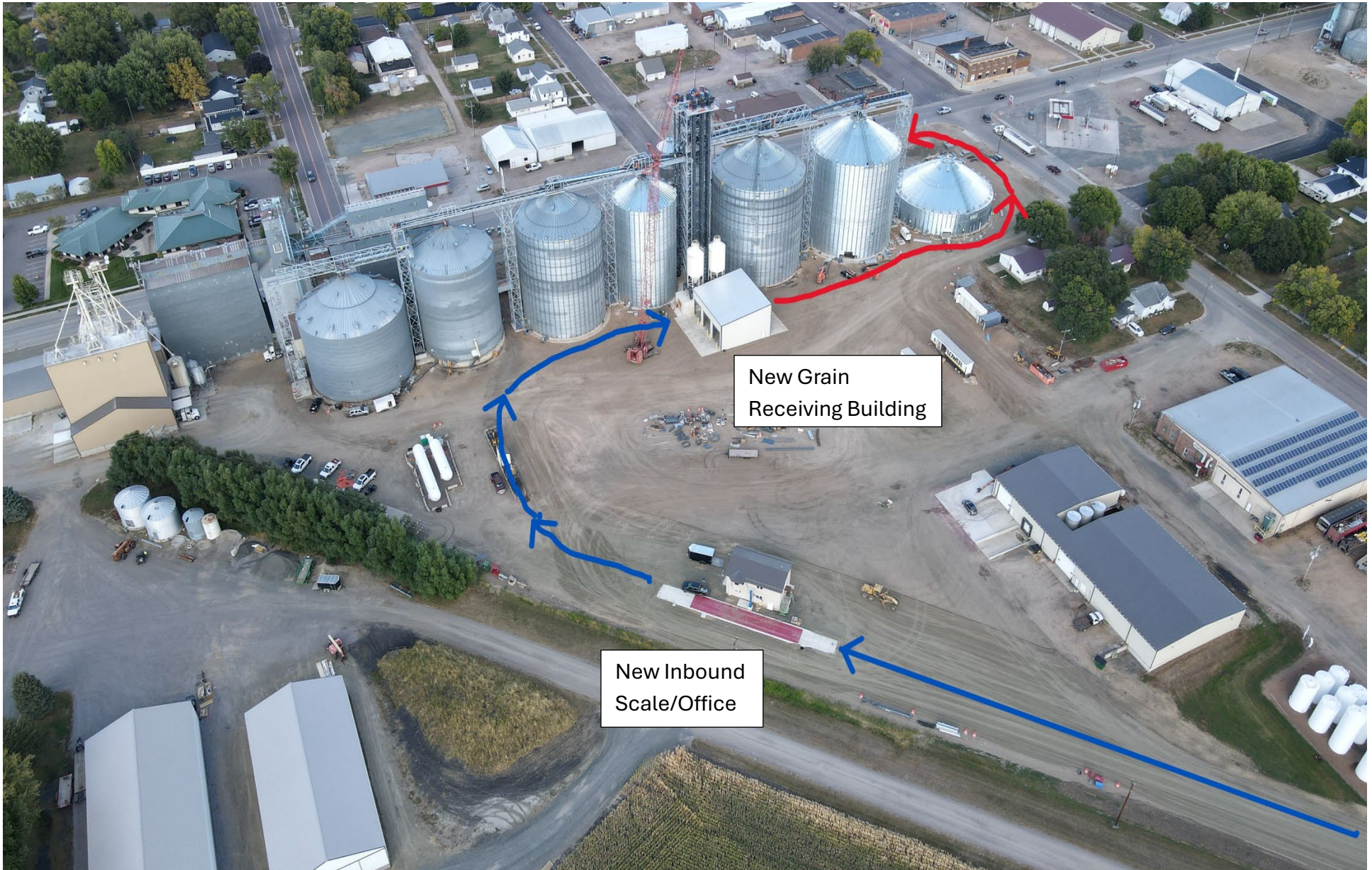
FARMWARD
COOPERATIVE®

New Morgan Grain Scale Procedures:

1. Proceed to probe/inbound scale facing south (entrance off highway 68)
 - a. Verify correct account and disposition of grain
 - b. Wait for load to be probed, weighed, and graded
 - c. Observe pit number designation on green stoplight (light #'s 1-4)
 - d. Proceed to corresponding pit #

2. Pit 1 & 3 (Pits in new elevator receiving building)
 - a. Pit 4 will be dumped in the old wood house elevator

3. After exiting the new receiving pits, proceed to follow the road around the east bin to the new outbound scale to be weighed out. Your ticket will be printed on the scale.



New Grain
Receiving Building

New Inbound
Scale/Office

Inbound Truck Flow In **BLUE**
New Road Entrance Off State HWY 68

Outbound Truck Flow In **RED**
Follow Road Around East Bin To Outbound Scale



Incoming Loaded Truck Route



Unloaded Empty Truck Route



FARMWARD
COOPERATIVE®
Advancing farming for generations